

U.S. DEPARTMENT OF EDUCATION

Education Data Exchange Network (EDEN)

***EMAPS* User Guide: State
Supplemental Survey-IDEA**

Release 1.0

March 2011

U.S. Department of Education

Arne Duncan
Secretary

Office of Planning, Evaluation and Policy Development

Carmel Martin
Assistant Secretary

March 2011

This technical guide is in the public domain. Authorization to reproduce it in whole or in part is granted. While permission to reprint this publication is not necessary, the citation should be: U.S. Department of Education, Office of Planning, Evaluation and Policy Development, *EMAPS User Guide: State Supplemental Survey - IDEA*, Washington, D.C., 2011.

This technical guide is also available on the Department's Web site at: <http://www.ed.gov/edfacts>

On request, this publication is available in alternate formats, such as Braille, large print, or computer diskette. For more information, please contact the Department's Alternate Format Center at (202) 260-0852 or (202) 260-0818.

DOCUMENT CONTROL

DOCUMENT INFORMATION

Title:	EMAPS User Guide: State Supplemental Survey – IDEA
Issue Date:	March 2011
Security Level:	Unclassified – For Official Use Only

DOCUMENT HISTORY

Version Number	Date	Summary of Change
1.0	3/9/2011	Version 1.0 of this document introduces maintaining State Supplemental Survey- IDEA in <i>EMAPS</i> .

PREFACE

The EMAPS State Supplemental Survey – IDEA User Guide is intended to provide assistance to IDEA Part B Data Managers responsible for providing metadata related to the SY 2010-11 IDEA data collection.

This guide will be updated if major system modifications affect user procedures.

CONTENTS

DOCUMENT CONTROL.....	ii
PREFACE	iii
1.0 INTRODUCTION.....	5
1.1 Technical Requirements.....	5
1.2 Overview of the EMAPS State Supplemental Survey- IDEA Process	5
2.0 FREQUENTLY ASKED QUESTIONS	6
3.0 EMAPS STEP-BY-STEP INSTRUCTIONS.....	8
3.1 Log in to EMAPS	8
3.2 Launch the “State Supplemental Survey-IDEA” Process in EMAPS.....	11
3.3 State Homepage	11
3.4 Introduction Form	12
3.5 Exiting Special Education (N/X009)	12
3.6 IDEA – Child Counts (N/X002 & N/X089).....	15
3.7 IDEA – Environments (N/X002).....	19
3.8 IDEA – Environments (N/X089).....	21
3.9 IDEA – Staffing (N/X099)	23
3.10 IDEA – Discipline (N/X006 & N/X144)	24
3.11 IDEA – Assessment (N/X004, N/X075, N/X078, N/X081 and N/X 146)	25
3.12 Final Confirmation Form.....	28
3.13 HTML Reports.....	31

1.0 INTRODUCTION

The *EDFacts Metadata and Process System (EMAPS)* is a Web-based tool to provide State Education Agencies (SEAs) with an easy method to report and maintain information on state policies, plans, and metadata to aid in the analysis of data collected. This document is intended to help guide the IDEA Part B Data Managers to enter data and the state *EDFacts* Coordinators in accessing the *EMAPS* State Supplemental Survey - IDEA Metadata process.

1.1 Technical Requirements

Before Beginning:

It is recommended that Internet Explorer version 6 or 7 is used for accessing *EMAPS*.

1.2 Overview of the *EMAPS* State Supplemental Survey- IDEA Process

The State Supplemental Survey - IDEA is completed by each state's Part B Data Manager annually. This survey collects metadata related to the SY 2010-11 IDEA data collection. The responses are shared with the OSEP data contactors. State IDEA Part B data managers are authorized to provide the metadata for this survey.

The following changes are implemented in this release.

1. Defaults to most of the questions in this survey have been set to Yes. Exceptions to this default value have been specifically documented in this User Guide.
2. Required comment fields have been added throughout document.
3. A new "None" option has been added to several responses.
4. In the Early Childhood Environments section, qualifiers have been added to describe range of children with disabilities (IDEA).
5. A new Assessment section with related new file specifications N/X004, N/X075, N/X078, N/X081 and N/X146 has been added.
6. The Expulsion screen has been renamed as Discipline screen and file specifications N/X006 and N/X144 are reported under this subset.
7. More validations and checks and balances have been added to the existing functionality.
8. Based on the answers to questions on each form, other fields or questions are displayed or hidden from the users.
9. Once the data are entered, data are retained in the system and displayed to the users upon return to the survey.
10. Document saves to state specific folder.
11. Copy of document available for download.

2.0 FREQUENTLY ASKED QUESTIONS

Below is a list of frequently asked questions regarding this EMAPS process. Additional questions about how the process works should be directed to the Partner Support Center (PSC).

IDEA.Q1: In the previous release, I had problems seeing the data entered previously into the form. If I needed to exit the application for some reason, when I logged back in, I was not able to see the information I entered previously.

The system was re-designed so that users will always see the latest data that is available in the system since the data will be saved in EMAPS when each screen is completed.

IDEA.Q2: I noticed that there is no “Previous” button on the final confirmation screen. How do I to make edits to the data I submitted in this form?

If the user needs to correct some value, the user will have to exit the survey. The user will then log back into the survey and navigate to the desired screen using the “Next” button at the bottom of each screen until they reach the screen that needs to be amended. Note: We are trying to add the “Previous” button to the subsequent releases.

IDEA.Q3: How do I ensure that the data I entered is saved?

The data will be saved when the user hits the “Next” button at the bottom of any screen. If the user hits the “Previous” button before hitting the “Next” button, the data will not be saved. The user may also see a “Save” button at the top of each screen. Please ignore the top button. Even if the user hits that “Save” button, data will not be saved for this application.

IDEA.Q4: Where do I document the actual minimum graduation age for my state?

The user needs to document that in the Regular High School Diplomas section under the Exiting Special Education section. If the user answers “Yes” to the question “Is there a minimum age for graduation with a regular high school diploma in your state?” the user must enter a comment in the comment field, as it is a mandatory field. The comment must define what the minimum graduation age is.

IDEA.Q5: Do I have the option to input dates in both the month and comment field for the Child Counts (N/X002 & N/X089)??

No. The user has the option of selecting either the Month field or entering a description of the child count date in the comment field. If the user selects to populate the Month field, the comment field will not be displayed. If the user does not use the Month field, then the user must enter the child count date into the comment field. If, after entering a comment the user wants to go back to enter the month, the user needs to select a month and the comment field will not be displayed on the screen. If the user does not answer either of these questions, the system will display an error and the user will not be able to continue on to the next screen.

IDEA.Q6: On the confirmation screen, I see “Save Draft” and “Save and Finish” buttons. When do I use either of them?

If the user is satisfied with the information entered in the survey, the user clicks on the “Save and Finish” button. If the user selects this option, the U.S. department of education can determine which of the states have completed the survey. The user can make edits to the survey any number of times before the due date. If the user needs to come back to the survey some other time before the due date, the user clicks on the “Save Draft” button.

IDEA.Q7: Will I be able to make any edits to the survey after the due date?

The user will only be able to make any edits to the survey before the due date for the survey. If the users want to make changes to the survey after the due date they should contact the Partner Support Center.

IDEA.Q8: What do I do if I cannot access the HTML report from within the survey after I complete it or save the survey as a draft?

The user can access the HTML report from the menus on the right hand side on the survey homepage.

IDEA.Q9: Can more than one user in my state get user access to the process?

Yes. If additional access is needed to the State Supplemental Survey-IDEA process, please have your IDEA Part B Data Manager contact the PSC to request this access. Your *EDFacts* Coordinator will have read-only access to this survey, unless otherwise requested.

IDEA.Q10: Some of my fields appear to be truncated, how do I correct this?

Make sure that the user is using the recommended Browser configuration for Internet Explorer 6.0 or 7.0 and that the user has maximized the screen. If the user is still experiencing issues, the user may need to adjust the Zoom Level to below 100% on the bottom of the Internet Explorer screen.

IDEA.Q11: Who do I contact if I have questions about the EMAPS process?

If the user has any questions about the EMAPS State Supplemental Survey-IDEA process, please contact the Partner Support Center (eden_ss@ed.gov)

Telephone: 877-457-3336 (877-HLP-EDEN)

TTY/TDD: 888-403-3336 (888-403-EDEN)

Monday through Friday 8am to 6pm ET

3.0 EMAPS STEP-BY-STEP INSTRUCTIONS

Follow the steps below to review and edit the State Supplemental Survey - IDEA information in EMAPS.

Note: The screen shots used to detail the following steps are similar, but not identical, to what users may see in the EMAPS process.

3.1 Log into EMAPS

There are three ways for EDEN Submission System (ESS) users to enter the EMAPS tool: (A) through the EMAPS website directly, (B) through ESS, or (C) the ED Facts webpage. Contact the Partner Support Center if the user needs their EMAPS username and password reset and use one of the paths to EMAPS shown below.

Once the user has accessed the EMAPS log-in screen, the user will see the screen shown below in Option A. **Enter your username and password, then click the “Log In” button.**

Note: The user’s EMAPS username and password are case sensitive.

Option A. To log-in directly to EMAPS, go to this link:

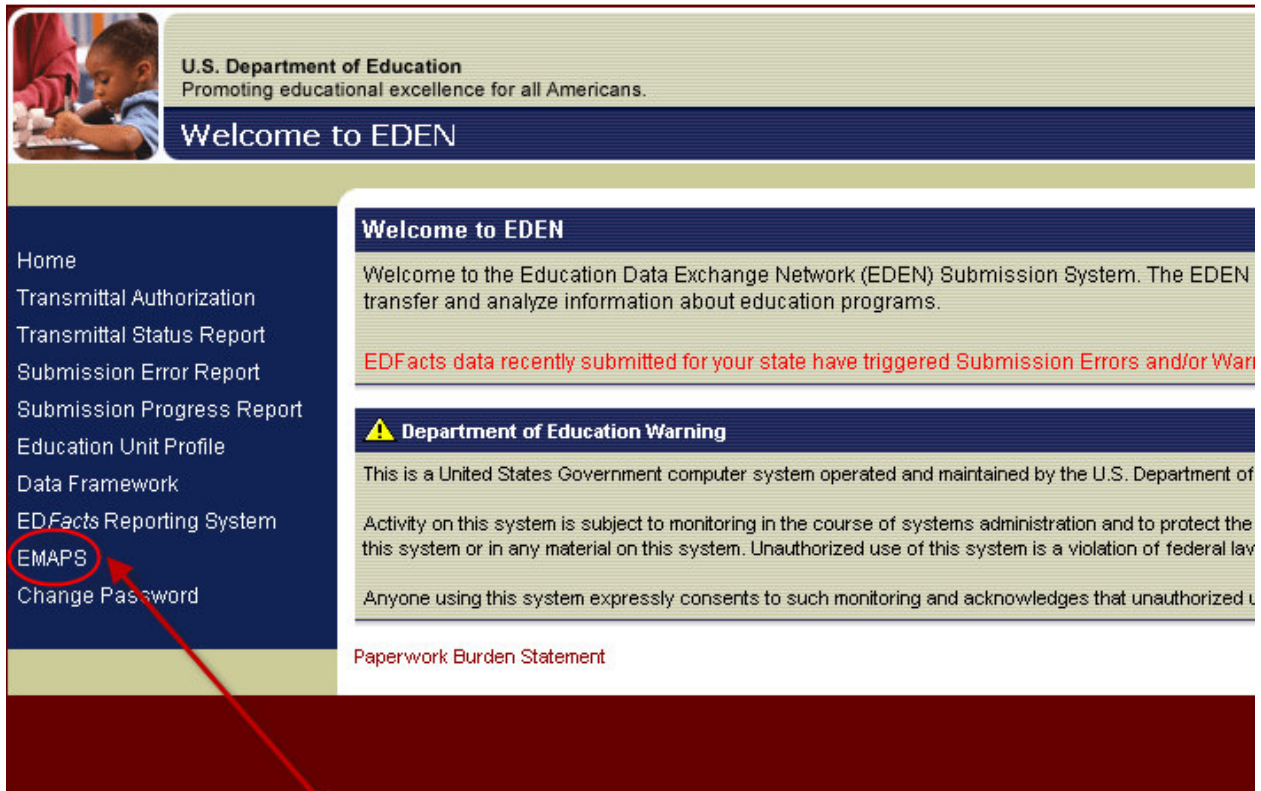
<https://emaps.ed.gov/suite/>



The screenshot displays the EMAPS login interface. At the top left is the EMAPS logo, which includes a circular emblem with a tree and the text "EMAPS" in large blue letters, with "ED Facts Metadata and Process System" in smaller text below it. To the right of the logo is a language selection dropdown menu currently set to "English (United States)". Below the logo are two text input fields: the first is labeled "Username:" and the second is labeled "Password:". Underneath the password field is a checkbox with the label "Optimize for slow connections.". At the bottom left of the form area is a blue circular button containing a white house icon, with the text "Log In" centered below it.

Option B. To log into EMAPS through ESS, go to this link:
<http://eden.ed.gov.EDENPortal>
Enter your ESS username and password.

After signing into ESS, select the EMAPS link which appears on the left-hand side of the screen.



U.S. Department of Education
Promoting educational excellence for all Americans.

Welcome to EDEN

Home
Transmittal Authorization
Transmittal Status Report
Submission Error Report
Submission Progress Report
Education Unit Profile
Data Framework
EDFacts Reporting System
EMAPS
Change Password

Welcome to EDEN

Welcome to the Education Data Exchange Network (EDEN) Submission System. The EDEN transfer and analyze information about education programs.

EDFacts data recently submitted for your state have triggered Submission Errors and/or War

⚠ Department of Education Warning

This is a United States Government computer system operated and maintained by the U.S. Department of

Activity on this system is subject to monitoring in the course of systems administration and to protect the this system or in any material on this system. Unauthorized use of this system is a violation of federal law

Anyone using this system expressly consents to such monitoring and acknowledges that unauthorized u

Paperwork Burden Statement

Link to EMAPS

Option C. To log into EMAPS through the ED Facts website, go to this link:
<https://www.ed.gov/edfacts>

The screenshot shows the ED.gov website with the following elements:

- Header:** ED.gov logo, U.S. Department of Education, search bar, and navigation tabs (Funding, Policy, Research, News, About ED).
- Left Sidebar (About ED):** Overview, Contacts, Offices, Boards & Commissions, Initiatives (White House, ED Initiatives), Publications, ED Performance & Accountability, Jobs, and a list of links including About ED, Budget & Performance, News, Publications, Teaching Resources, FAQs, Contact, Help, Jobs at ED, and Online Services.
- Main Content (INITIATIVES):**
 - The EDFacts Initiative:** A paragraph describing the initiative's purpose to centralize performance data.
 - MORE RESOURCES:** A list of links including 'EDFacts Log-In (ED staff only)', 'EDEN Submission System Log-In (State users and ED staff) and EDFacts Log-In (State users with EDFacts access)', and the circled link 'EDFacts Metadata and Process System Log-In'.
 - How Do I Find...?:** A list of topics like Student loans, Pell grants, Accreditation, schools, Grants, No Child Left Behind, and More.
 - ED Recovery Act:** A button labeled 'LEARN MORE'.
 - Related Topics:** A list including Mission.
- Bottom Section:** 'NEW FROM EDFACTS!' with the headline 'New Summer 2010 EDFacts State Profiles Now Available!'.
- Taskbar:** Shows open windows for 'U.S. Department of ...', 'The EDFacts Initiativ...', 'Inbox - Microsoft O...', 'EMAPS Submission ...', and 'Apple Software Upd...'.

A red circle highlights the link 'EDFacts Metadata and Process System Log-In' in the 'MORE RESOURCES' section. A red arrow points from the text 'Link to EMAPS' to this link.

3.2 Launch the “State Supplemental Survey-IDEA” Process in EMAPS

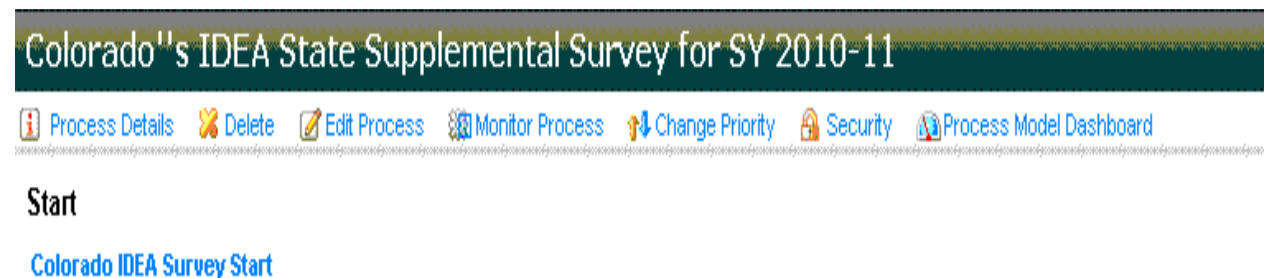
Once logged into EMAPS, the user is immediately taken to the EMAPS “homepage”. To return to the homepage at any time, click on the round “Home” button on the top right side of the screen.

The link to enter the process appears as a blue hyperlink. When you click on the “State Supplemental Survey--IDEA” hyperlink, a new screen will pop up. The user will then be able to begin the EMAPS process.

3.3 State Homepage

After clicking on the start link on the EMAPS homepage, a screen for the user’s state, the State Supplemental Survey - IDEA Homepage will show. This screen may show additional content related to the user’s state supplemental survey in the future.

The screenshot below shows how this screen will display for Colorado. To start the state supplemental survey-IDEA, click on the IDEA Survey Start link. In the example below this link is “Colorado IDEA Survey Start.” Note that you will only see your state’s survey.



3.4 Introduction Screen

The introduction screen lists the purpose of the survey and the forms to be completed, along with the applicable file specifications. Click on the “Next” button to enter the survey. Note that each question that is marked with a red asterisk (*) requires a response to continue to the next section of the survey

State Supplemental Survey - IDEA

Colorado

Note to IDEA Part B Data Manager

The purpose of this survey is to collect metadata related to the SY 2010-11 IDEA data collection. These responses will be shared with OSEP's data contractor as they review the SY 2010-11 data. State IDEA Part B Data Managers are authorized to provide the metadata in this survey. You will be answering questions about the following data:

- Children with Disabilities (IDEA) - Exiting Special Education (N/X009) -Table 4
- Children with Disabilities (IDEA) - School Age (N/X002) - Tables 1 & 3
- Children with Disabilities (IDEA) - Early Childhood (N/X089) - Tables 1 & 3
- Special Education Personnel (N/X099) -Table 2
- Discipline (N/X006 & N/X144) - Table 5
- Assessments (N/X004, N/X075, N/X078, N/X081 & N/X146) - Table 6

Note: all questions marked with a red asterisk (*) require a response.

[Next](#)

3.5 Exiting Special Education (N/X009)

This screen is divided into sections. Each section has questions and comment fields that the user will need to answer or comment on. Based on how the user answers these questions, additional questions or fields may be displayed or hidden.

Section: Reference Period

When the user enters this section for the first time, the following questions or comment fields are displayed.

The default value for the question “Does your state use the required reference period of July 1 to June 30 to report exiting data for IDEA?” is “Yes”.

Reference Period
Does your state use the required reference period of July 1 to June 30 to report exiting data for IDEA? *
<input checked="" type="radio"/> Yes
<input type="radio"/> No

If the user selects “No” for the question above, additional date fields are displayed.

Reference Period	
Does your state use the required reference period of July 1 to June 30 to report exiting data for IDEA? *	What is the reference period used?
<input type="radio"/> Yes	<input type="text" value="3/7/2011"/>
<input checked="" type="radio"/> No	Start date
	<input type="text" value="12/31/2011"/>
	End date

There is a validation to verify if the start date for the process is earlier than the end date. The user cannot proceed to the next question unless this is corrected. Please see the example below:

Reference Period	
Does your state use the required reference period of July 1 to June 30 to report exiting data for IDEA? *	What is the reference period used?
<input type="radio"/> Yes	<input type="text" value="3/5/2015"/>
<input checked="" type="radio"/> No	Start date
	<input type="text" value="12/1/2011"/>
	Your start date exceeds your end date.
	End date

Note: If the user decides to enter the date manually and not use the calendar function, a valid date must be entered in the MM/DD/YYYY format. Special characters must not be entered in the date field.

Section: Maximum Age for Services

When the user enters this section for the first time, you will see that none of the radio buttons for the question “What is the maximum age at which a student with disabilities (IDEA) can receive special education services?” are activated.

Maximum Age for Services

What is the maximum age at which a student with disabilities (IDEA) can receive special education services? *

18 years
 19 years
 20 years
 21 years
 22 years
 23 years
 24 years
 25 years
 26 years
 none

Comment

(Optional)

Please select the appropriate radio button. The comment field is optional.

Section: Certificates

When the user enters this section for the first time, the following questions and comment fields are displayed.

The default value for the question “Can a student with disabilities (IDEA) exit an educational program by receiving a high school completion certificate, modified diploma, or similar document?” is “Yes”.

Can a student with disabilities (IDEA) exit an educational program by receiving a high school completion certificate, modified diploma, or similar document? *

Yes
 No

If yes, please provide the statutory/regulatory/policy citation(s).

Optional - List the document(s) and section name(s).

It is recommended that the user enter a comment in the “If yes, please provide the statutory/regulatory/policy citation(s)” field.

Section: Regular High School Diplomas

When the user enters this section for the first time, the following questions and comment fields are displayed. The default value for the “Is there a minimum age for graduation with a regular high school diplomas in your state?” is “Yes”.

Regular High School Diplomas

Is there a minimum age for graduation with a regular high school diploma in your state? *

 Yes No

Comment

(Required when "Yes")

A comment is required for this question if the answer to the above question is “Yes.” An error message is displayed and the user will not be able to proceed to the next screen until the comment is provided.

Regular High School Diplomas

Is there a minimum age for graduation with a regular high school diploma in your state? *

 Yes No

Comment

(Required when "Yes")

Please Explain!

When the user clicks on the “Next” button at the bottom of the screen, the system will send the user to the IDEA – Child Counts (N/X002 & N/X089) section.

3.6 IDEA – Child Counts (N/X002 & N/X089)

This screen is divided into sections. Each section has questions and comment fields that the user will need to answer or comment on. Based on how the user answers these questions, additional questions or fields may be displayed or hidden.

Section: Child Count Date

When the user accesses this section for the first time, the following questions and comment fields are displayed.

Child Count Date

What date between October 1 and December 1 is your state’s IDEA child count date? *

Month *

If the IDEA child count date is not an exact date, please provide the description.

The user has the option of selecting either the Month field or entering a description of the child count date in the “If the IDEA child count date is not an exact date, please provide the description” comment field.

Child Count Date

What date between October 1 and December 1 is your state's IDEA child count date?*

Month*

If the IDEA child count date is not an exact date, please provide the description.

Please select a date or provide a description of the timeframe.

If the user selects to populate the Month field and select the months between October and December, the comment field will not be displayed.

Child Count Date

What date between October 1 and December 1 is your state's IDEA child count date?*

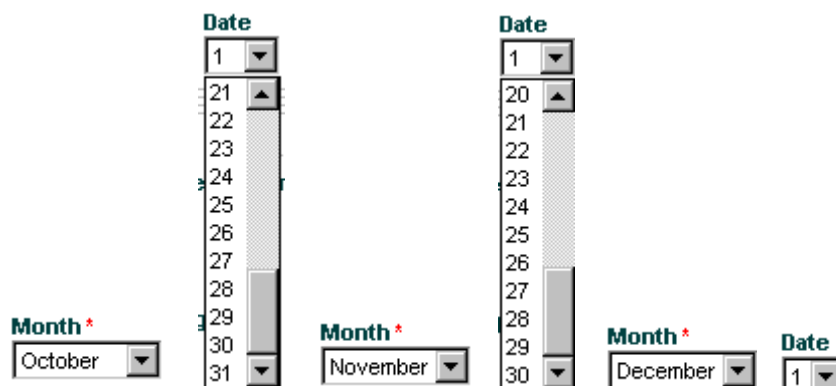
Month*

Date

If the user does not use the Month field for the question “What date between October 1 and December 1 is your state’s IDEA child count date?”, then the user needs to enter a comment in the “If the IDEA child count date is not an exact date, please provide the description” comment field. Failure to answer either one of these questions will result in an error and the user will not be able to continue on to the next question.

At any point, if the user decides to go back to enter the month, when any month is selected, the comment field will not be displayed on the screen. The user can then set the month and date fields.

The user has the option of selecting one of the following three options for the Month field and selecting one of the following three options for the Date fields.



Section: State-Operated Programs (SOP)

When the user accesses this section for the first time, the following questions and comment fields are displayed. The user must respond to both questions related to SOPs.

State-Operated Programs

Does your state report data for all state-operated programs (SOPs) related to children with disabilities (IDEA)? *

- Yes, ALL SOPs are reported
 Yes, SOME SOPs are reported
 No, NONE of the SOPs are reported

SOPs are reported at which one of the following:

- SEA and LEA levels
 SEA only
 LEA only

Comment

(Required when None)

The user can choose any of the three options. If the user does not select any option for the question “SOPs are reported at which one of the following”, the system will not allow the user to proceed to the next question and will display an error message.

State-Operated Programs

Does your state report data for all state-operated programs (SOPs) related to children with disabilities (IDEA)? *

- Yes, ALL SOPs are reported
 Yes, SOME SOPs are reported
 No, NONE of the SOPs are reported

SOPs are reported at which one of the following:

- SEA and LEA levels
 SEA only
 LEA only

Please indicate the levels on which your state reports.

Comment

(Required when None)

If the user selects the option “No, NONE of the SOPs are reported” in the question “Does your state report data for all state-operated programs (SOPs) related to children with disabilities (IDEA)?”, the question “SOPs are reported at which one of the following levels?” is not displayed on the screen.

State-Operated Programs

Does your state report data for all state-operated programs (SOPs) related to children with disabilities (IDEA)? *

- Yes, ALL SOPs are reported
 Yes, SOME SOPs are reported
 No, NONE of the SOPs are reported

Comment

(Required when None)

If the user selects the “No, NONE of the SOPs are reported”, the user is required to explain the answer in the comment field.

State-Operated Programs

Does your state report data for all state-operated programs (SOPs) related to children with disabilities (IDEA)? *

- Yes, ALL SOPs are reported
- Yes, SOME SOPs are reported
- No, NONE of the SOPs are reported

Comment

(Required when None)

"Comment field is required, when None is chosen."

Section: Child Counts

When the user accesses this section for the first time, the following questions and comment fields are displayed.

Child Count

Please indicate all of the disability categories used by your state.

Select Yes for each category that applies.

- | | | |
|-------------------------------------------------------------------------------------------------|---------------------------------------------------------------------------------------------------------|---------------------------------------------------------------------------------------------------|
| * Autism <input checked="" type="radio"/> Yes
<input type="radio"/> No | * Mental Retardation <input type="radio"/> Yes
<input checked="" type="radio"/> No | * Traumatic Brain Injury <input checked="" type="radio"/> Yes
<input type="radio"/> No |
| * Deaf-Blindness <input type="radio"/> Yes
<input checked="" type="radio"/> No | * Multiple Disabilities <input checked="" type="radio"/> Yes
<input type="radio"/> No | * Visual Impairment <input checked="" type="radio"/> Yes
<input type="radio"/> No |
| * Developmental Delay <input type="radio"/> Yes
<input checked="" type="radio"/> No | * Orthopedic Impairment <input checked="" type="radio"/> Yes
<input type="radio"/> No | * Other Health Impairment <input checked="" type="radio"/> Yes
<input type="radio"/> No |
| * Emotional Disturbance <input type="radio"/> Yes
<input checked="" type="radio"/> No | * Specific Learning Disability <input checked="" type="radio"/> Yes
<input type="radio"/> No | |
| * Hearing Impairment <input checked="" type="radio"/> Yes
<input type="radio"/> No | * Speech or Language Impairment <input checked="" type="radio"/> Yes
<input type="radio"/> No | |

Comment

(Required for 'No')

The default value for the question “Please indicate all of the disability categories used by your state.” is “Yes”.

If the user selects “No” for any one of the disability categories in the question above, the user must enter a value in the “Comment” field. If the user tries to go to the next question without entering a comment, the system will indicate an error.

Child Count

Please indicate all of the disability categories used by your state.

Select Yes for each category that applies.

- | | | |
|-------------------------------------------------------------------------------------------------|---------------------------------------------------------------------------------------------------------|---------------------------------------------------------------------------------------------------|
| * Autism <input type="radio"/> Yes
<input checked="" type="radio"/> No | * Mental Retardation <input type="radio"/> Yes
<input checked="" type="radio"/> No | * Traumatic Brain Injury <input type="radio"/> Yes
<input checked="" type="radio"/> No |
| * Deaf-Blindness <input type="radio"/> Yes
<input checked="" type="radio"/> No | * Multiple Disabilities <input checked="" type="radio"/> Yes
<input type="radio"/> No | * Visual Impairment <input checked="" type="radio"/> Yes
<input type="radio"/> No |
| * Developmental Delay <input type="radio"/> Yes
<input checked="" type="radio"/> No | * Orthopedic Impairment <input checked="" type="radio"/> Yes
<input type="radio"/> No | * Other Health Impairment <input checked="" type="radio"/> Yes
<input type="radio"/> No |
| * Emotional Disturbance <input type="radio"/> Yes
<input checked="" type="radio"/> No | * Specific Learning Disability <input checked="" type="radio"/> Yes
<input type="radio"/> No | |
| * Hearing Impairment <input type="radio"/> Yes
<input checked="" type="radio"/> No | * Speech or Language Impairment <input checked="" type="radio"/> Yes
<input type="radio"/> No | |

Comment

(Required for 'No')

Please explain your No answers for Autism
Please explain your No answer for Mental Retardation
Please explain your No answer for Traumatic Brain Injury

Section: Development Delay

Note: This section is displayed only if the user selects “Yes” for the “Developmental Delay” category in the question “Please indicate all of the disability categories used by your state” in the Child Count section under the Child Counts (N/X002 & N/X089) form. If the user indicated “No”, the question below is hidden.

When the user accesses this section for the first time, the following questions and comment fields are displayed.

Developmental Delay

What ages are included in your state's definition for developmental delay for children with disabilities (IDEA)?

* 3 Years	<input checked="" type="radio"/> Yes <input type="radio"/> No	* 7 Years	<input checked="" type="radio"/> Yes <input type="radio"/> No
* 4 Years	<input checked="" type="radio"/> Yes <input type="radio"/> No	* 8 Years	<input checked="" type="radio"/> Yes <input type="radio"/> No
* 5 Years	<input checked="" type="radio"/> Yes <input type="radio"/> No	* 9 Years	<input checked="" type="radio"/> Yes <input type="radio"/> No
* 6 Years	<input checked="" type="radio"/> Yes <input type="radio"/> No		

Comment

(Optional)

The default values for all the ages in the question “What ages are included in your state’s definition of developmental delay for children with disabilities (IDEA)?” are “Yes”.

The comment field is optional.

When the user clicks on the “Next” button at the bottom of the screen, the system will send the user to the IDEA – Environments (N/X002) form.

3.7 IDEA – Environments (N/X002)

This screen is divided into sections. Each section has questions and comment fields that the user will need to answer or comment on. Based on how the user answers these questions, additional questions or fields may be displayed or hidden.

Section: Environment for School-Age Children with disabilities (IDEA)

When the user accesses this section for the first time, the following questions and comment fields are displayed.

Environments for School-Age Children with Disabilities (IDEA)

Please indicate whether your state permits placement of children with disabilities (IDEA), ages 6 through 21, in the following educational environments;

- | | |
|-------------------------------------------------------------------------------------------------------------------------------------------------------------------------------------------------------------------------------------------------------------------------------------------------------------------------------------------------------------------------------------------------------------------------------------------------------------------------------------------------------------------------------------------------------------------------------------------------------------------------------------------------|----------------------------------------------------------------------------------------------------------------------------------------------------------------------------------------------------------------------------------------------------------------------------------------------------------------------------------------------------------------------------------------------------------------------------------------------------------------------------------------------------------------------------------------------------------------------------------------------------------------------------------------------------------------------------|
| <p>* Regular Class</p> <p><input checked="" type="radio"/> permit for all age children
 <input type="radio"/> permit depending on age of the child
 <input type="radio"/> does not permit</p> <p>* Separate School</p> <p><input checked="" type="radio"/> permit for all age children
 <input type="radio"/> permit depending on age of the child
 <input type="radio"/> does not permit</p> <p>* Residential Facility</p> <p><input checked="" type="radio"/> permit for all age children
 <input type="radio"/> permit depending on age of the child
 <input type="radio"/> does not permit</p> | <p>* Homebound/Hospital</p> <p><input checked="" type="radio"/> permit for all age children
 <input type="radio"/> permit depending on age of the child
 <input type="radio"/> does not permit</p> <p>* Correctional Facility</p> <p><input checked="" type="radio"/> permit for all age children
 <input type="radio"/> permit depending on age of the child
 <input type="radio"/> does not permit</p> <p>* Parentally Placed in Private Schools</p> <p><input checked="" type="radio"/> permit for all age children
 <input type="radio"/> permit depending on age of the child
 <input type="radio"/> does not permit</p> |
|-------------------------------------------------------------------------------------------------------------------------------------------------------------------------------------------------------------------------------------------------------------------------------------------------------------------------------------------------------------------------------------------------------------------------------------------------------------------------------------------------------------------------------------------------------------------------------------------------------------------------------------------------|----------------------------------------------------------------------------------------------------------------------------------------------------------------------------------------------------------------------------------------------------------------------------------------------------------------------------------------------------------------------------------------------------------------------------------------------------------------------------------------------------------------------------------------------------------------------------------------------------------------------------------------------------------------------------|

Comment

(Optional)

The default values for the question “Please indicate if your state permits placement for children with disabilities (IDEA), ages 6 through 21, in the following educational environments.” is set to “permit for all age children”.

If the user selects the option “permit depending on age of the child” for the educational environments “Correctional Facility” or “Parentally Placed in Private Schools”, three check boxes will appear to indicate the students’ age and the user can select two out of the three options. A maximum of two age ranges can be selected.

Environments for School-Age Children with Disabilities (IDEA)

Please indicate whether your state permits placement of children with disabilities (IDEA), ages 6 through 21, in the following educational environments;

- | | |
|-------------------------------------------------------------------------------------------------------------------------------------------------------------------------------------------------------------------------------------------------------------------------------------------------------------------------------------------------------------------------------------------------------------------------------------------------------------------------------------------------------------------------------------------------------------------------------------------------------------------------------------------------|--------------------------------------------------------------------------------------------------------------------------------------------------------------------------------------------------------------------------------------------------------------------------------------------------------------------------------------------------------------------------------------------------------------------------------------------------------------------------------------------------------------------------------------------------------------------------------------------------------------------------------------------------------------------------------------------------------------------------------------------------------------------------------------------------------------------------------------------------------------------------------------------------------------------------------------------|
| <p>* Regular Class</p> <p><input type="radio"/> permit for all age children
 <input checked="" type="radio"/> permit depending on age of the child
 <input type="radio"/> does not permit</p> <p>* Separate School</p> <p><input type="radio"/> permit for all age children
 <input checked="" type="radio"/> permit depending on age of the child
 <input type="radio"/> does not permit</p> <p>* Residential Facility</p> <p><input type="radio"/> permit for all age children
 <input checked="" type="radio"/> permit depending on age of the child
 <input type="radio"/> does not permit</p> | <p>* Homebound/Hospital</p> <p><input type="radio"/> permit for all age children
 <input checked="" type="radio"/> permit depending on age of the child
 <input type="radio"/> does not permit</p> <p>* Correctional Facility</p> <p><input type="radio"/> permit for all age children
 <input checked="" type="radio"/> permit depending on age of the child
 <input type="radio"/> does not permit</p> <p>Ages</p> <p><input type="checkbox"/> 6-11
 <input type="checkbox"/> 12-17
 <input type="checkbox"/> 18-21</p> <p>* Parentally Placed in Private Schools</p> <p><input type="radio"/> permit for all age children
 <input checked="" type="radio"/> permit depending on age of the child
 <input type="radio"/> does not permit</p> <p>Ages</p> <p><input type="checkbox"/> 6-11
 <input type="checkbox"/> 12-17
 <input type="checkbox"/> 18-21</p> |
|-------------------------------------------------------------------------------------------------------------------------------------------------------------------------------------------------------------------------------------------------------------------------------------------------------------------------------------------------------------------------------------------------------------------------------------------------------------------------------------------------------------------------------------------------------------------------------------------------------------------------------------------------|--------------------------------------------------------------------------------------------------------------------------------------------------------------------------------------------------------------------------------------------------------------------------------------------------------------------------------------------------------------------------------------------------------------------------------------------------------------------------------------------------------------------------------------------------------------------------------------------------------------------------------------------------------------------------------------------------------------------------------------------------------------------------------------------------------------------------------------------------------------------------------------------------------------------------------------------|

Comment

(Optional)

If the user selects all three age options on this question and tries to move to the next question, the system will indicate an error and will instruct the user to select the “permit for all age children” option.

Environments for School-Age Children with Disabilities (IDEA)

Please indicate whether your state permits placement of children with disabilities (IDEA), ages 6 through 21, in the following educational environments;

<p>* Regular Class</p> <p><input type="radio"/> permit for all age children <input checked="" type="radio"/> permit depending on age of the child <input type="radio"/> does not permit</p> <p>* Separate School</p> <p><input type="radio"/> permit for all age children <input checked="" type="radio"/> permit depending on age of the child <input type="radio"/> does not permit</p> <p>* Residential Facility</p> <p><input type="radio"/> permit for all age children <input checked="" type="radio"/> permit depending on age of the child <input type="radio"/> does not permit</p>	<p>* Homebound/Hospital</p> <p><input type="radio"/> permit for all age children <input checked="" type="radio"/> permit depending on age of the child <input type="radio"/> does not permit</p> <p>* Correctional Facility</p> <p><input type="radio"/> permit for all age children <input checked="" type="radio"/> permit depending on age of the child <input type="radio"/> does not permit</p> <p>Ages</p> <p><input checked="" type="checkbox"/> 6-11 <input checked="" type="checkbox"/> 12-17 <input checked="" type="checkbox"/> 18-21 Please select only two, if all three apply please select 'permit for all age children'</p> <p>* Parentally Placed in Private Schools</p> <p><input type="radio"/> permit for all age children <input checked="" type="radio"/> permit depending on age of the child <input type="radio"/> does not permit</p> <p>Ages</p> <p><input checked="" type="checkbox"/> 6-11 <input checked="" type="checkbox"/> 12-17 <input checked="" type="checkbox"/> 18-21 Please select only two, if all three apply please select 'permit for all age children'</p>
-------------------------------------------------------------------------------------------------------------------------------------------------------------------------------------------------------------------------------------------------------------------------------------------------------------------------------------------------------------------------------------------------------------------------------------------------------------------------------------------------------------------------------------------------------------------------------------------------------------------------------------------------	--------------------------------------------------------------------------------------------------------------------------------------------------------------------------------------------------------------------------------------------------------------------------------------------------------------------------------------------------------------------------------------------------------------------------------------------------------------------------------------------------------------------------------------------------------------------------------------------------------------------------------------------------------------------------------------------------------------------------------------------------------------------------------------------------------------------------------------------------------------------------------------------------------------------------------------------------------------------------------------------------------------------------------------------------------------------------------------------------------------------------------------------------------------------------------------------------------------------

Comment

(Optional)

When the user clicks on the “Next” button at the bottom of the screen, the system will send the user to the IDEA – Environments (N/X089) section.

3.8 IDEA – Environments (N/X089)

This screen is divided into sections. Each section has questions and comment fields that the user will need to answer or comment on. Based on how the user answers these questions, additional questions or fields may be displayed or hidden.

Section: Early Childhood Environments for Children with Disabilities (IDEA)

When the user accesses this section for the first time, the following questions and comment fields are displayed.

The default value for all the categories is “permit for all ages”.

Early Childhood Environments for Children with Disabilities (IDEA)

Please indicate whether your state permits the placement of children with disabilities (IDEA) ages 3 through 5, in the following educational environments.

Regular Early Childhood Program *

- permit for all age children
- permit depending on age of the child
- does not Permit

Separate Special Education Class *

- permit for all age children
- permit depending on age of the child
- does not Permit

Separate School *

- permit for all age children
- permit depending on age of the child
- does not Permit

Residential Facility *

- permit for all age children
- permit depending on age of the child
- does not Permit

Home *

- permit for all age children
- permit depending on age of the child
- does not Permit

Service Provider Location *

- permit for all age children
- permit depending on age of the child
- does not Permit

Comment

(Optional)

If the user selects the educational environment option “Residential Facility”, the “Ages” field will be displayed. This field will not be displayed for any other option.

Early Childhood Environments for Children with Disabilities (IDEA)

Please indicate whether your state permits the placement of children with disabilities (IDEA) ages 3 through 5, in the following educational environments.

Regular Early Childhood Program *

- permit for all age children
- permit depending on age of the child
- does not Permit

Separate Special Education Class *

- permit for all age children
- permit depending on age of the child
- does not Permit

Separate School *

- permit for all age children
- permit depending on age of the child
- does not Permit

Residential Facility *

- permit for all age children
- permit depending on age of the child
- does not Permit

Ages

- 3
- 4
- 5

Home *

- permit for all age children
- permit depending on age of the child
- does not Permit

Service Provider Location *

- permit for all age children
- permit depending on age of the child
- does not Permit

Comment

(Optional)

If the user selects all three age options on this question and tries to move to the next question, the system will indicate an error and will instruct the user to select the “permit for all age children” option. A maximum of two ages can be selected.

Early Childhood Environments for Children with Disabilities (IDEA)

Please indicate whether your state permits the placement of children with disabilities (IDEA) ages 3 through 5, in the following educational environments.

Regular Early Childhood Program *

- permit for all age children
 permit depending on age of the child
 does not Permit

Separate Special Education Class *

- permit for all age children
 permit depending on age of the child
 does not Permit

Separate School *

- permit for all age children
 permit depending on age of the child
 does not Permit

Residential Facility *

- permit for all age children
 permit depending on age of the child
 does not Permit

Ages

- 3
 4
 5

Please select two Ages, otherwise select permit for all age children

Home *

- permit for all age children
 permit depending on age of the child
 does not Permit

Service Provider Location *

- permit for all age children
 permit depending on age of the child
 does not Permit

Comment

(Optional)

When the user clicks on the “Next” button at the bottom of the screen, the system will send the user to the IDEA – Staffing (N/X099) section.

3.9 IDEA – Staffing (N/X099)

This screen is divided into sections. Each section has questions and comment fields that the user will need to answer or comment on. Based on how the user answers these questions, additional questions or fields may be displayed or hidden.

Section: IDEA Staffing

When the user accesses this section for the first time, the following questions and comment fields are displayed.

The default value for all the categories is “Yes”.

IDEA Staffing

Please indicate all related service personnel categories that are employed or contracted to provide related services to children with disabilities (IDEA), ages 3 through 21, in your state?

<p>Psychologists *</p> <p><input checked="" type="radio"/> Yes <input type="radio"/> No</p> <p>Social Workers *</p> <p><input checked="" type="radio"/> Yes <input type="radio"/> No</p> <p>Occupational Therapists *</p> <p><input checked="" type="radio"/> Yes <input type="radio"/> No</p> <p>Audiologists *</p> <p><input checked="" type="radio"/> Yes <input type="radio"/> No</p>	<p>Physical Education Teachers and Recreation and Therapeutic Recreation Specialists *</p> <p><input checked="" type="radio"/> Yes <input type="radio"/> No</p> <p>Physical Therapists *</p> <p><input checked="" type="radio"/> Yes <input type="radio"/> No</p> <p>Speech-Language Pathologists *</p> <p><input checked="" type="radio"/> Yes <input type="radio"/> No</p>	<p>Interpreters *</p> <p><input checked="" type="radio"/> Yes <input type="radio"/> No</p> <p>Counselors and Rehabilitation Counselors *</p> <p><input checked="" type="radio"/> Yes <input type="radio"/> No</p> <p>Orientation and Mobility Specialists *</p> <p><input checked="" type="radio"/> Yes <input type="radio"/> No</p> <p>Medical/Nursing Service Staff *</p> <p><input checked="" type="radio"/> Yes <input type="radio"/> No</p>
---------------------------------------------------------------------------------------------------------------------------------------------------------------------------------------------------------------------------------------------------------------------------------------------------------------------------------------------------------------------------------------------------------------------------------------	---------------------------------------------------------------------------------------------------------------------------------------------------------------------------------------------------------------------------------------------------------------------------------------------------------------------------------------------------------------------------------------------------------------	----------------------------------------------------------------------------------------------------------------------------------------------------------------------------------------------------------------------------------------------------------------------------------------------------------------------------------------------------------------------------------------------------------------------------------------------------------------------------------------------

Comment

(Required for 'No')

If the user selects “No” for any of the personnel categories and does not enter a comment in the “Comment” field, the system will not allow the user to proceed to the next question and will display an error.

IDEA Staffing

Please indicate all related service personnel categories that are employed or contracted to provide related services to children with disabilities (IDEA), ages 3 through 21, in your state?

<p>Psychologists *</p> <p><input type="radio"/> Yes <input checked="" type="radio"/> No</p> <p>Social Workers *</p> <p><input checked="" type="radio"/> Yes <input type="radio"/> No</p> <p>Occupational Therapists *</p> <p><input checked="" type="radio"/> Yes <input type="radio"/> No</p> <p>Audiologists *</p> <p><input checked="" type="radio"/> Yes <input type="radio"/> No</p>	<p>Physical Education Teachers and Recreation and Therapeutic Recreation Specialists *</p> <p><input type="radio"/> Yes <input checked="" type="radio"/> No</p> <p>Physical Therapists *</p> <p><input checked="" type="radio"/> Yes <input type="radio"/> No</p> <p>Speech-Language Pathologists *</p> <p><input checked="" type="radio"/> Yes <input type="radio"/> No</p>	<p>Interpreters *</p> <p><input type="radio"/> Yes <input checked="" type="radio"/> No</p> <p>Counselors and Rehabilitation Counselors *</p> <p><input checked="" type="radio"/> Yes <input type="radio"/> No</p> <p>Orientation and Mobility Specialists *</p> <p><input checked="" type="radio"/> Yes <input type="radio"/> No</p> <p>Medical/Nursing Service Staff *</p> <p><input checked="" type="radio"/> Yes <input type="radio"/> No</p>
---------------------------------------------------------------------------------------------------------------------------------------------------------------------------------------------------------------------------------------------------------------------------------------------------------------------------------------------------------------------------------------------------------------------------------------	---------------------------------------------------------------------------------------------------------------------------------------------------------------------------------------------------------------------------------------------------------------------------------------------------------------------------------------------------------------------------------------------------------------	----------------------------------------------------------------------------------------------------------------------------------------------------------------------------------------------------------------------------------------------------------------------------------------------------------------------------------------------------------------------------------------------------------------------------------------------------------------------------------------------

Comment

(Required for 'No')

Please provide a comment to explain No for Psychologist.
Please provide a comment to explain No for Physical Education Teachers and Recreation and Therapeutic Recreation Specialists
Please provide a comment to explain No for Interpreters

When the user clicks on the “Next” button at the bottom of the screen, the system will send you to the IDEA – Discipline (N/X006 & N/X144) section.

3.10 IDEA – Discipline (N/X006 & N/X144)

This screen is divided into sections. Each section has questions and comment fields that the user will need to answer or comment on. Based on how the user answers these questions, additional questions or fields may be displayed or hidden.

Section: Discipline

When the user accesses this section for the first time, the following questions and comment fields are displayed.

Discipline

Does your state remove students with disabilities (IDEA) from their educational placement for disciplinary purposes for the remainder of the school year or longer?

Yes
 No

If the user selects “No” to the above question a required comment field “If No, please provide the relevant statutory/regulatory policy citation(s) that prohibit this practice” is displayed.

Discipline

Does your state remove students with disabilities (IDEA) from their educational placement for disciplinary purposes for the remainder of the school year or longer?

Yes

No

If No, please provide the relevant statutory/regulatory/policy citation(s) that prohibit this practice.

List document(s) and section name(s).

If the user does not enter a comment in this field the system will not allow the user to go to the next question and will display an error message.

Discipline

Does your state remove students with disabilities (IDEA) from their educational placement for disciplinary purposes for the remainder of the school year or longer?

Yes

No

If No, please provide the relevant statutory/regulatory/policy citation(s) that prohibit this practice.

List document(s) and section name(s).

Please provide the relevant statutory/regulatory policy citation(s) that defines

When the user clicks on the “Next” button at the bottom of the form, the system will send you to the IDEA – Assessment (N/X004, N/X075, N/X078, N/X081 and N/X 146) form.

3.11 IDEA – Assessment (N/X004, N/X075, N/X078, N/X081 and N/X 146)

This screen is divided into sections. Each section has questions and comment fields that the user will need to answer or comment on. Based on how the user answers these questions, additional questions or fields may be displayed or hidden.

Section: Assessment

When the user accesses this section for the first time, the following questions and comment fields are displayed.

Assessment

In which grade is the high school assessment most typically administered?

- Grade 9
 Grade 10
 Grade 11
 Grade 12

Which of the following are conditions under which a student with a disability (IDEA) may not take the assessment in accordance with ESEA in your state?

- Students whose assessment results were invalid
 Students who took an out-of-level test
 Parental opt out
 Absent
 Did not participate for other reasons
 All

Does your state permit significant medical emergency as an exemption from the state assessment for all students? *

- Yes
 No

Does your state have children with disabilities (IDEA) who are limited English proficient and who were in the U.S. less than 12 months prior to the reading/language arts state assessment? *

- Yes
 No

Shall these LEP children with disabilities (IDEA) take the regular reading/language arts assessments?

- Yes
 No

Shall these LEP children with disabilities (IDEA) be included in performance and accountability reporting for AYP purposes?

- Yes
 No

Comment

(Optional)

Please select one of the options to the question “In which grade is the high school assessment most typically administered?”

Please select all the applicable options to the question “Which of the following are conditions under which a student with a disability (IDEA) may not take the assessment, in accordance with ESEA, in your state?”

Please select one of the options to the question “Does your state permit significant medical emergency as an exemption from the state assessment for all students?”

If the user selects “No” to the question “Does your state have children with disabilities (IDEA) who are limited English proficient and who were in the U.S. less than 12 months prior to the reading/language arts state assessment?”, then the two questions “Shall these LEP children with disabilities (IDEA) take the regular reading/language arts assessment” and “Shall these LEP children with disability (IDEA) be included in performance and accountability reporting for AYP purposes?” will not be displayed on the screen.

Assessment

In which grade is the high school assessment most typically administered?

- Grade 9
 Grade 10
 Grade 11
 Grade 12

Which of the following are conditions under which a student with a disability (IDEA) may not take the assessment in accordance with ESEA in your state?

- Students whose assessment results were invalid
 Students who took an out-of-level test
 Parental opt out
 Absent
 Did not participate for other reasons
 All

Does your state permit significant medical emergency as an exemption from the state assessment for all students? *

- Yes
 No

Does your state have children with disabilities (IDEA) who are limited English proficient and who were in the U.S. less than 12 months prior to the reading/language arts state assessment? *

- Yes
 No

Comment

(Required)

The user needs to enter a comment in the “Comment” field if the user answers “No” to the “Does your state have children with disabilities (IDEA) who are limited English proficient and who were in the U.S. less than 12 months prior to the reading / language arts state assessment” question, otherwise the system will not allow the user to go to the next form.

Note: If the user however enters “Yes” to the above question, the comment field is optional.

Assessment

In which grade is the high school assessment most typically administered?

- Grade 9
 Grade 10
 Grade 11
 Grade 12

Which of the following are conditions under which a student with a disability (IDEA) may not take the assessment in accordance with ESEA in your state?

- Students whose assessment results were invalid
 Students who took an out-of-level test
 Parental opt out
 Absent
 Did not participate for other reasons
 All

Does your state permit significant medical emergency as an exemption from the state assessment for all students? *

- Yes
 No

Does your state have children with disabilities (IDEA) who are limited English proficient and who were in the U.S. less than 12 months prior to the reading/language arts state assessment? *

- Yes
 No

Comment

(Required)

Please explain!

At this point the user is finished entering data.

3.12 Final Confirmation Screen

The confirmation screen showing all the data the user entered for the survey is displayed. The user will not be able to change any of the entered information on the confirmation screen. If the user needs to correct some value, the user will exit the survey and then go back into the survey and to the appropriate screen. The following screen in this document is indicative only.

State Supplemental Survey - IDEA

Colorado

Confirmation

Thank you for entering your metadata. Your responses to the State Supplemental Survey appear below. To make updates or changes, navigate back to the previous forms.

Reference Period

Does your state use the required reference period of July 1 to June 30 to report exiting data for IDEA?
no

Reference Period Start Date 3/10/2011	Reference Period End Date 3/24/2011
----------------------------------------------	--------------------------------------------

Maximum Age for Services

What is the maximum age of a student with disabilities (IDEA) can receive special education services?
18

Comment

Certificates

Can a student with disabilities (IDEA) exit an educational program by receiving a high school completion certificates, modified diplomas, or similar document?
no

Please provide the statutory/regulatory/policy citation(s).

Regular High School Diplomas

Is there a minimum age for graduation with a regular high school diploma in your state?
yes

Comment
t

Child Count Date

What date between October 1 and December 1 is your state's IDEA child count date?
N/A

If the IDEA child count date is not an exact date, please provide the description.
rr

State-Operated Programs

Does your state report data for all state-operated programs related to children with disabilities (IDEA)?
all

SOPs are reported at which one of the following?
SE&LEA

Comment

Child Count

Disability categories used by your state.

Category	Included?
Autism	Yes <input type="checkbox"/>
Deaf-Blindness	Yes <input type="checkbox"/>
Developmental Delay	Yes <input type="checkbox"/>
Emotional Disturbance	Yes <input type="checkbox"/>
Hearing Impairment	Yes <input type="checkbox"/>
Mental Retardation	Yes <input type="checkbox"/>

Multiple Disabilities	<input type="checkbox"/> Yes <input checked="" type="checkbox"/> No
Orthopedic Impairment	<input type="checkbox"/> Yes <input checked="" type="checkbox"/> No
Specific Learning Disability	<input type="checkbox"/> Yes <input checked="" type="checkbox"/> No
Speech or Language Impairment	<input type="checkbox"/> Yes <input checked="" type="checkbox"/> No
Traumatic Brain Injury	<input type="checkbox"/> Yes <input checked="" type="checkbox"/> No
Visual Impairment	<input type="checkbox"/> Yes <input checked="" type="checkbox"/> No
Other Health Impairment	<input type="checkbox"/> Yes <input checked="" type="checkbox"/> No

Comment

Developmental Delay

What ages are included in your state's definition for developmental delay for children with disabilities (IDEA)?

Ages	Included
3 years	<input type="checkbox"/> Yes <input checked="" type="checkbox"/> No
4 years	<input type="checkbox"/> Yes <input checked="" type="checkbox"/> No
5 years	<input type="checkbox"/> Yes <input checked="" type="checkbox"/> No
6 years	<input type="checkbox"/> Yes <input checked="" type="checkbox"/> No
7 years	<input type="checkbox"/> Yes <input checked="" type="checkbox"/> No
8 years	<input type="checkbox"/> Yes <input checked="" type="checkbox"/> No
9 years	<input type="checkbox"/> Yes <input checked="" type="checkbox"/> No

Comment

Environments for School-Aged Children with Disabilities (IDEA)

Please indicate whether your state permits placement of children with disabilities (IDEA), ages 6 through 21, in the following educational environments.

Environment	Allowed?
Regularly Class	<input type="checkbox"/> Permit all age children <input checked="" type="checkbox"/> No
Separate School	<input type="checkbox"/> Permit all age children <input checked="" type="checkbox"/> No
Residential Facility	<input type="checkbox"/> Permit all age children <input checked="" type="checkbox"/> No
Homebound/Hospital	<input type="checkbox"/> Permit all age children <input checked="" type="checkbox"/> No
Correctional Facility	<input type="checkbox"/> Permit all age children <input checked="" type="checkbox"/> No
Parentally Placed in Private Schools	<input type="checkbox"/> Permit all age children <input checked="" type="checkbox"/> No

Comment

Early Childhood Environments for Children with Disabilities (IDEA)

Please indicate whether your state permits the placement of children with disabilities (IDEA) ages 3 through 5 in the following educational environments.

Environment	Used?
Regular Early Childhood Program	Permit all age children
Separate Special Education Class	Permit all age children
Separate School	Permit all age children
Residential Facility	Permit all age children
Home	Permit all age children
Service Provider Location	Permit all age children

Residential Ages

Comment

IDEA Staffing

All related service personnel categories that are employed or contracted in your state.

Category Name	Allowed?
Psychologists	Yes
Social Workers	Yes
Occupational Therapists	Yes
Audiologists	Yes
Physical Education	Yes
Physical Therapists	Yes
Speech-Language Pathologists	Yes
Intepreters	Yes
Counselors & Rehabilitation Counselors	Yes
Orientation and Mobility Specialists	Yes
Medical/Nursing Service Staff	Yes

Comment

IDEA - Discipline (N/X006 & N/X144)

Does your state remove students with disabilities (IDEA) from their educational placement for disciplinary purposes for the remainder of the school year or longer?

yes

IDEA - Assessment

In which grade is the high school assessment most typically administered?

9

Which of the following are conditions under which a student with a disability (IDEA) may not take the assessment in accordance with ESEA in your state?

Category Name
Students whose assessment results were invalid
Students who took an out-of-level test
Parental opt out
Absent
Did not participate for other reasons
All

Does your state permit significant medical emergency as an exemption form the state assessment for all students?

no

Does your state have children with disabilities (IDEA) who are limited English proficient and who were in the U.S. less than 12 months prior to the reading/language arts state assessment?

no

Comment

rrr

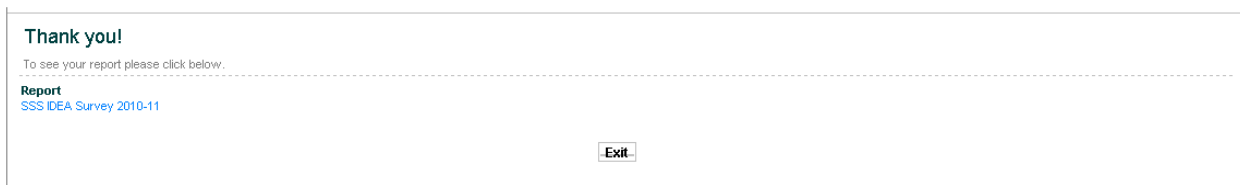
Save Draft

Save and Finish

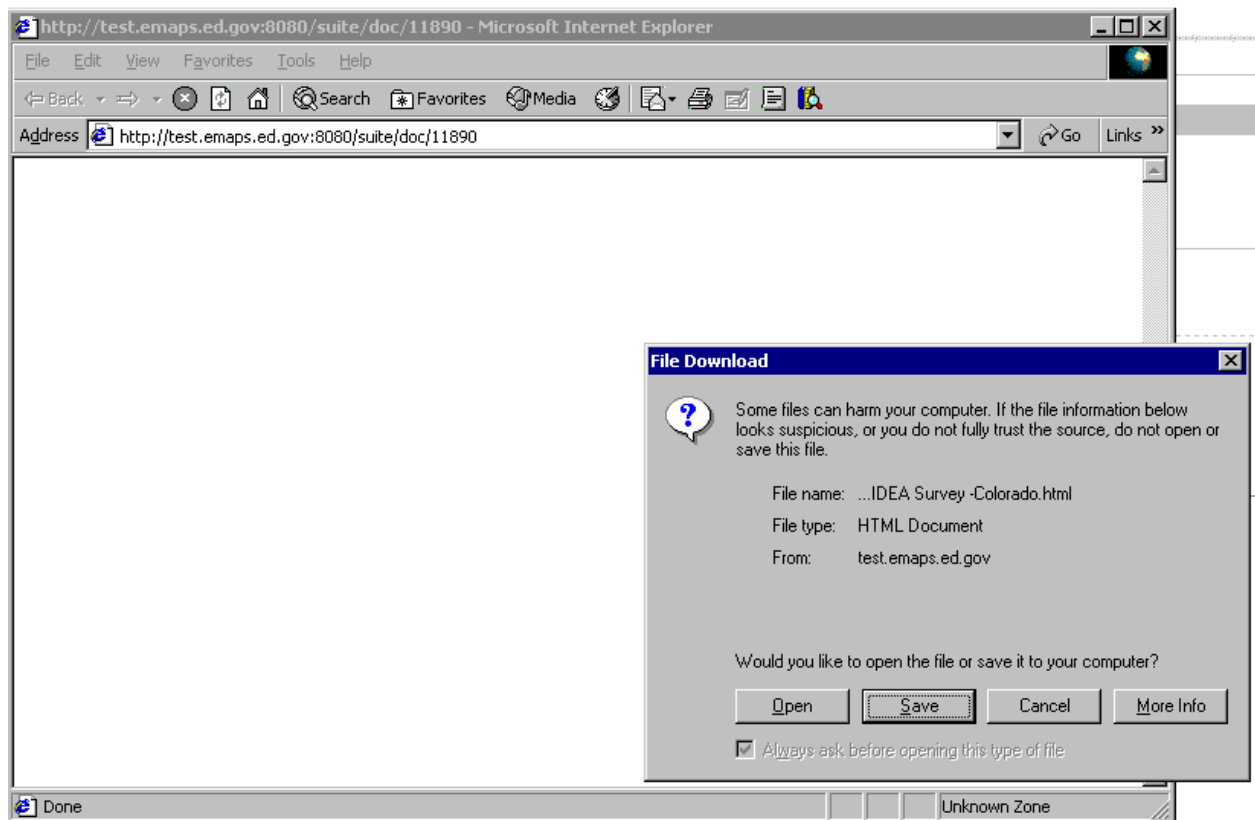
If the user is satisfied with the information entered in the survey, the user clicks on the “Save and Finish” button. The user can still edit the data after selecting this option before the due date. If the user needs to come back to this survey at some other time before the due date, the user clicks on the “Save Draft” button.

3.13 HTML Reports

Once the user has made all edits and selected either the “Save and Finish” or the “Save Draft” button, the user will be directed to this final confirmation screen. At the middle of the form is a blue hyperlink to a HTML report of the data the user just submitted.



If the user clicks on the Report link, a HTML form with all the details is displayed.



The user can either open the report or save the document. When the user opens the report, this is what is displayed. The following data are indicative only.



Colorado

**State Supplemental Survey - IDEA State Policy
School Year: 2010-11**

This report shows the most recent data that was entered by Colorado.

Reference Period

Does your state use the required reference period of July 1 to June 30 to report exiting data for IDEA? yes

Maximum Age for Services

What is the maximum age at which a student with disabilities (IDEA) can receive special education services? 18

Comment

Certificates

Can a student with disabilities (IDEA) exit an educational program by receiving a high School completion certificate, modified diploma, or similar document? yes

Regular High School Diplomas

Is there a minimum age for graduation with a regular high school diploma in your state? yes

Comment

Child Count Date

What date between October 1 and December 1 is your state's IDEA child count date?
If the IDEA child count date is not an exact date, please provide the description.

State Operated Programs

Does your state report data for all state-operated programs (SOPs) related to children with disabilities (IDEA)? all

SOP's are reported at SEA&LEA level

Comment

Child Count

Disability Categories Used by your state

Category	Used?
Autism	Yes
Deaf-Blindness	Yes
Developmental Delay	Yes
Emotional Disturbance	Yes
Hearing Impairment	Yes
Mental Retardation	Yes
Multiple Disabilities	Yes
Orthopedic Impairment	Yes
Specific Learning Disability	Yes
Speech or Language Impairment	Yes
Traumatic Brain Injury	Yes
Visual Impairment	Yes
Other Health Impairment	Yes

Comment

Developmental Delay

What ages are included in your state's definition for developmental delay for children with disabilities (IDEA)

Ages	Included?
3 years	Yes
4 years	Yes
5 years	Yes
6 years	Yes
7 years	Yes
8 years	Yes
9 years	Yes

Comment

Environments for School-Aged Children with Disabilities (IDEA)

Please indicate whether your state permits placement of children with disabilities (IDEA), ages 6 through 12, in the following educational environments;

Environment	Permitted?	Ages
Regular Class	permit for all age children	
Separate School	permit for all age children	
Residential Facility	permit for all age children	
Homebound/Hospital	permit for all age children	
Correctional Facility	permit for all age children	
Parentally Placed in Private Schools	permit for all age children	

Comment

Comment

Early Childhood Environments for Children with Disabilities (IDEA)

Please indicate whether your state permits the placement of children with disabilities (IDEA) ages (3 through 5) in the following educational environments.

Environment	Permitted?	Ages
Regular Early Childhood Program	permit for all age children	
Separate Special Education Class	permit for all age children	
Separate School	permit for all age children	
Residential Facility	permit for all age children	
Home	permit for all age children	
Service Provider Location	permit for all age children	

Comment

IDEA Staffing

Please indicate all related service personnel categories that are employed or contracted to provide related services to children with disabilities (IDEA), ages 3 through 21, in your state?

Category	Employed or Contracted?
Psychologists	Yes
Social Workers	Yes
Occupational Therapists	Yes
Audiologists	Yes
Physical Education	Yes
Physical Therapists	Yes
Speech-Language Pathologists	Yes
Intepreters	Yes
Counselors	Yes

Orientation and Mobility Specialists	Yes
Medical/Nursing Service Staff	Yes

Comment

Discipline

Does your state remove students with disabilities (IDEA) from their educational placement for disciplinary purposes for the remainder of the school year or longer? yes

Assessment

In which grade is the high school assessment most typically administered? 9

Which of the following are conditions under which a student with a disability (IDEA) may not take the assessment in accordance with ESEA in your state?

Students whose assessment results were invalid

Students who took an out-of-level test

Parental opt out

Absent

Did not participate for other reasons

All

Does your state permit significant medical emergency as an exemption from the state assessment for all students? no

Does your state have children with disabilities (IDEA) who are limited English proficient and who were in the U.S. less than 12 months prior to the reading/language arts state assessment? no

Comment rrr

This data was generated on 3/13/2011 2:53 PM EST.



The Department of Education's mission is to promote student achievement and preparation for global competitiveness by fostering educational excellence and ensuring equal access.

www.ed.gov